

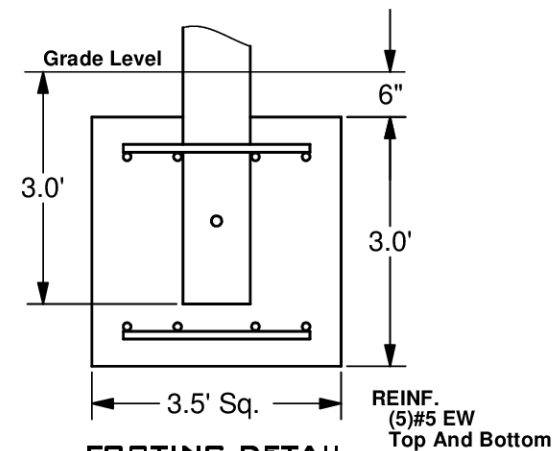
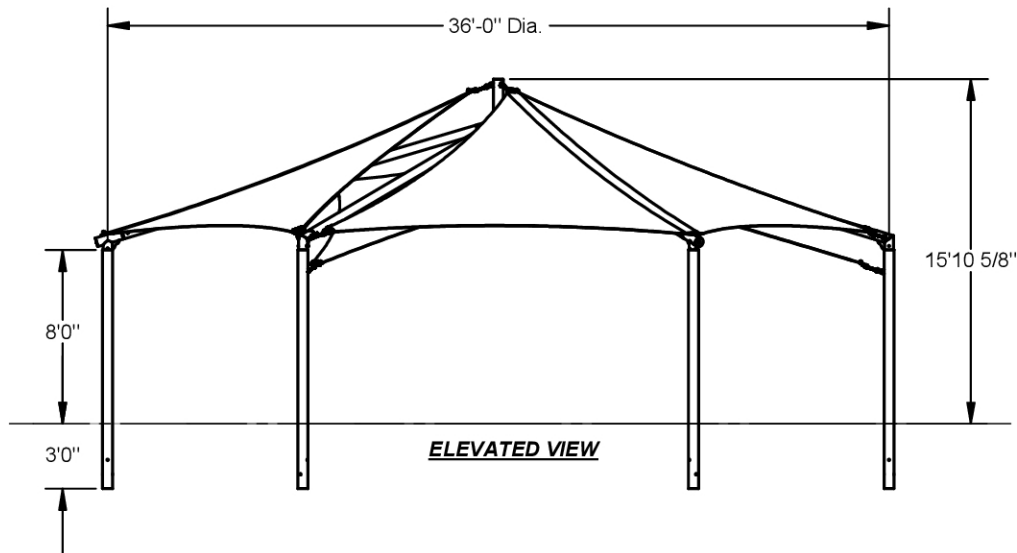
HEX SAND DOLLAR SHADE

36' Dia. x 8'

MODEL #:
HS363608IG (With Glide Elbows)
* Only Available In This Model



REF.#	PART DESCRIPTION	QTY.
1	Ø5 9/16" Column - Embedded	6
2	Ø5" Elbow	6
3	Ø5" Rafter - Swaged	6
4	Ø8 5/8"/Ø5 9/16" Hex Crown - (6) Socket	1
5	Fabric - With Cable Insert	6
6	Frame Hardware Kit	1



FOOTING DETAIL
*Footing design based on 1500
PSF soil bearing pressure.



These drawings are for reference only and should not be used as construction details. Materials, fasteners, and foundations are subject to change if professionally sealed engineering drawings are required. Designed for 93 MPH Basic Wind Speed.